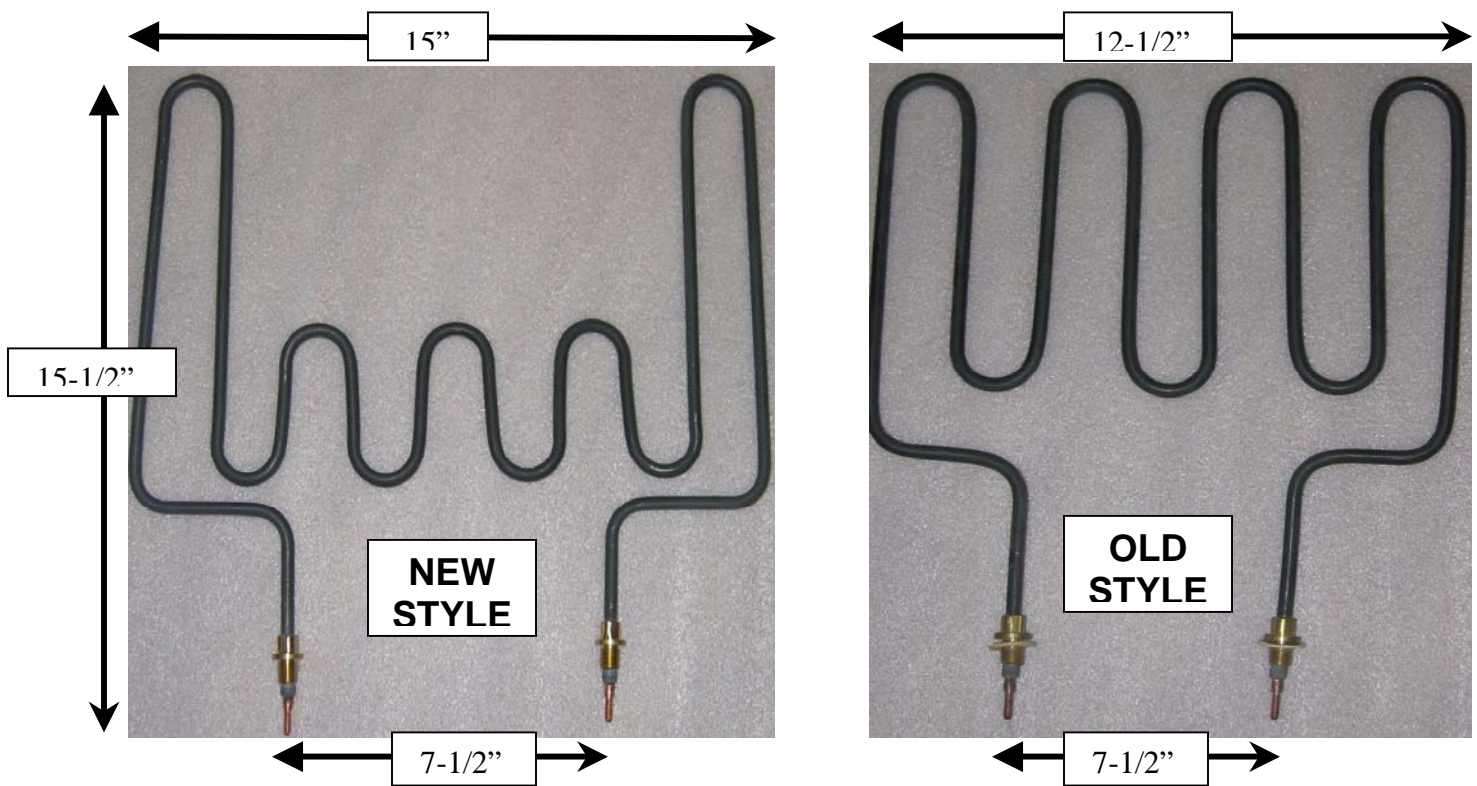


SAUNA *Craft*

Saunas & Steambaths

REPLACEMENT SAUNA ELEMENTS

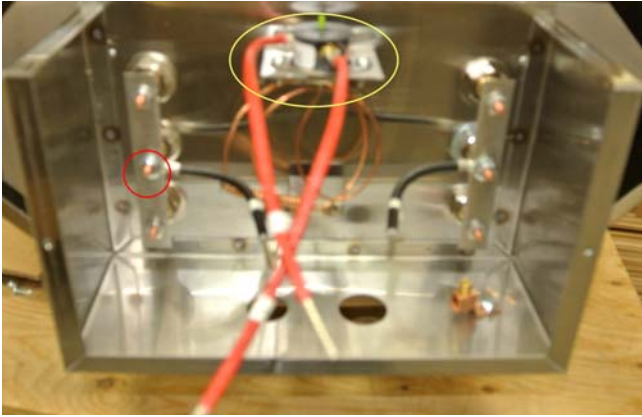


Sauna Craft elements have been redesigned recently to accommodate some of the newer heater designs. The height and terminal connections are the same. However, the new elements are a little wider. These elements still fit into the heaters. In a used heater, after extended use, the inner baffles may buckle slightly. If needed, you can squeeze the new elements to get them to fit in. This will in no way affect the element operation.

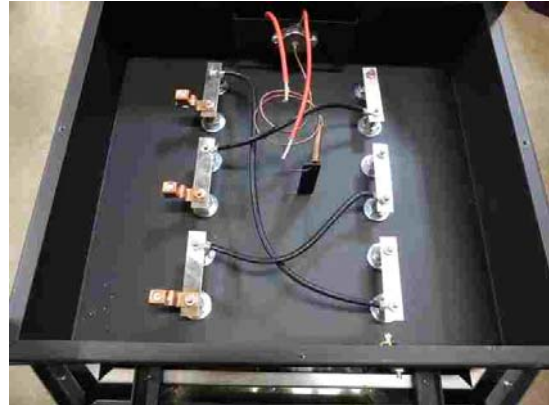


Picture of new style element installed in heater

Sauna Craft Element Replacement



1. showing three element, single phase heater



2. showing six element, 3-phase heater

Turn off breaker

Remove rock tray at top

Remove electrical cover plate

Remove wire connections from element being replaced using socket wrench or ratchet, remove bolt securing element to frame

Remove elements from top

Install new element with gaskets and washers as detailed in drawing

