

DISCOVER
the world of

SaunaFin

Saunas and Steambaths
Quality, Service & Craftsmanship Since 1962



Saunas are a centuries old tradition for relaxation and healthy living. Picture yourself in the soft, cedar scented warmth of your very own sauna as it soothes your tired muscles, cleanses your skin and revitalises your spirit. After one or two sessions in your own sauna, you will wonder how you ever lived without it.



DO-IT-YOURSELF SAUNA MATERIAL KIT

SAVE MONEY, SAVE TIME, BUILD A BETTER SAUNA



WE SUPPLY

SPECIFIED FULL LENGTHS - NO SEAMS

- 1 x 4 tongue & groove CLEAR, Western red cedar for walls and ceiling
- CLEAR cedar for all benches
- Corner molding & inside door casing
- CWS model sauna heater with black frame & Stainless Steel shell
- TPT3 control with 60 minute timer
- Foil vapour barrier
- Slide vent cover
- Vapour proof sauna light.
- All necessary screws and nails
- Pre-Hung, cedar framed, full-length glass door. Window is 16" x 64" tempered, thermopane insulated sealed unit.

YOU SUPPLY

- 2 x 4 SPF spruce studs for framing
- 3 1/2" fiberglass insulation
- Exterior finish, i.e. drywall

ADVANTAGES TO A MATERIAL KIT

The Material Kit provides all the special components necessary to properly and easily build your sauna. The kit provides specific cedar lengths. Builder supply warehouses and lumber yards generally carry only 8' or random lengths which creates a lot of waste. The kit also includes such items as cedar molding and door casing, which are not readily available.

VERSATILITY

It is easy to customize a sauna material kit. If the sauna is part of a larger renovation; such as a finished basement, or addition, it is easy to incorporate the sauna kit into whatever space is available. The sauna can be installed to suit particular settings; for example, exterior can be drywall and painted to match the outside decor of a bathroom.

NOTHING COULD BE EASIER

With the Saunafin Material Kit, building a sauna is one of the simpler do-it-yourself projects. Our rule of thumb is: If you can erect the stud framing, you will have no problem installing the sauna kit. It is designed specifically for the do-it-yourselfer and renovator. The bench framing, heater guard and moldings are pre-cut. If you have not built a sauna before, you will find the instruction booklet and drawings easy to follow.

QUALITY

Our Clear cedar material kits use only kiln-dried, clear, grade "A" & better, tongue & groove cedar. The cedar is over 1/2" thick to ensure strength and durability. Our most popular sauna kit has only 2 x 4 Clear cedar for benches and bench framing.

DO I HAVE TO USE CEDAR

While other materials are occasionally used, cedar is by far the most popular, most attractive and most practical. Cedar has a mild, pleasant fragrance that many people associate with saunas. Cedar's particular properties allow it to expand and contract. This is important in a sauna where the wood is exposed to extremely high, dry temperatures, interspersed with blasts of humidity when water is splashed on the heater or the walls.

HOW LONG WILL IT TAKE

The installation time will of course vary somewhat with the size of the sauna. On average, the sauna kits are installed in 14 - 20 hours. With the specified lengths, pre-cut moldings and pre-hung door, you will save at least 4 - 8 hours on your installation time.

IS THE SAUNA KIT PRE-CUT

No, while we do offer that service, we do not recommend it. The cedar will come in the next nearest foot. If the sauna has a 5'-9" wall, we will provide a 6'-0" length. This allows you to trim the boards yourself to guarantee the best fit. You can make allowances if the framing is not quite square or level.



SAUNA DOORS



CLEAR



OBSCURE



BRONZE



DESIGNER



CEDAR

All sauna doors include:

- Thermopane, Insulated, Tempered Safety Glass Window
- Doors pre-hung on the jamb
- Custom sizes available

SAUNA ACCESSORIES



Make the most of your sauna experience by adding a few special Sauna Accessories. A sauna bucket & dipper, to splash a little water over the rocks. Some scented essence to add a little "spice" to your sauna. We also offer a selection of thermometers, sand timers, sauna wraps and other specialized sauna items.

Small Sauna - under 4'-6" deep
Top bench 20", bottom 8"



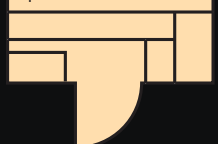
Standard Sauna
Two tier-top 20", bottom 16"



Optional top tier return bench



Optional two tier return bench



115 Bowes Rd, Unit 2 Concord, On. L4K 1H7
Ph: 905-738-4017 / 800-387-7029 Fax: (905) 738-2486
sales@saunafin.com www.saunafin.com

- Precisely engineered baffled construction provides enhanced air flow for quicker heat-up time and cost saving efficiency.
- CW Series sauna heaters can be mounted on a straight wall or in a corner. FM Series are floor mounted.
- Premium #304 stainless steel dual shielding shell design.
- Rugged construction for years of safe, low cost, efficient sauna enjoyment.
- Highest quality, low watt density heating elements.
- Expanded Mesh Rock Tray protects heating element while providing maximum air flow.
- Built-in high temperature safety cut-off.
- Safety certified .

MODEL SUFFIX #	Kw	VOLTS PHASE	AMPS BREAKER	WIRE	CUBIC FEET	
					MIN.	MAX.
Standard Household is 240 V, single phase						
431	4	240 / 1	17 / 30	10	100	150
531	5	240 / 1	21 / 30	10	150	250
631	6	240 / 1	25 / 30	10	200	300
731	7.5	240 / 1	31 / 40	8	290	375
931	9	240 / 1	37 / 50	8	360	450
1231	12	240 / 1	50 / 60	6	450	650
1531	15	240 / 1	63 / 80	4	600	800
Commercial Voltage is usually 208 V, three phase (single phase available)						
623	6	208 / 3	17 / 30	10	200	300
723	7.5	208 / 3	21 / 30	10	290	375
923	9	208 / 3	25 / 40	8	360	450
1223	12	208 / 3	33 / 50	8	450	700
1523	15	208 / 3	42 / 60	6	600	900
1823	18	208 / 3	50 / 70	6	750	1050

"CW" Series - 4 kw to 9kw (Wall Mounted)

"FM" Series - 12 kw to 18 kw (Floor Standing)



FM MODEL

Stainless Steel shell & baffles and Stainless frame and rock tray.
Size: 20" x 20" x 30"

FIVE YEAR RESIDENTIAL LIMITED WARRANTY.
ONE YEAR COMMERCIAL LIMITED WARRANTY.



CWS/CWM MODEL

100% Stainless Steel shell, baffles, frame and rock tray. Premium grade Stainless Steel will not rust.
Size: 12" x 18" x 24"

FIVE YEAR RESIDENTIAL LIMITED WARRANTY.
ONE YEAR COMMERCIAL LIMITED WARRANTY.



FM-XR MODEL

100% Stainless Steel shell, baffles, frame and rock tray. Premium grade Stainless Steel won't rust. "Euro-Style" with deep mesh rock tray, providing a larger, vertical column of rocks for more effective vaporization of water.
Ultra low watt density elements.
Size: 20" x 20" x 30"

LIFETIME RESIDENTIAL LIMITED WARRANTY
THREE YEAR COMMERCIAL LIMITED WARRANTY



CW-XR MODEL

100% Stainless Steel shell, baffles, frame and rock tray. Premium grade Stainless Steel won't rust. "Euro-Style" with deep mesh rock tray, providing a larger, vertical column of rocks for more effective vaporization of water. Ultra low watt density elements.
Size: 12" x 18" x 24"

LIFETIME RESIDENTIAL LIMITED WARRANTY
THREE YEAR COMMERCIAL LIMITED WARRANTY

Sauna controls

TPT3 Control



(Standard)
Thermostat, spring timer & pilot light

Electronic Control



(Optional)
Quiet operation
No ticking noise

TYLÖ SAUNA HEATERS

The heart of every sauna is the sauna heater. TYLO sauna heaters are widely renowned and greatly respected for their high quality and distinct features - but not everyone knows all the reasons for this. That's why we'd like to take the opportunity to point out some of the most important benefits of the TYLO design and why the hottest range of sauna heaters on the market knocks all the others cold.

Quickest heat-up time.

Twin side chambers maximize the through-flow of air, minimize heat-up time and economize on running costs. No other sauna heater uses less energy.

The lowest energy consumption.

Test after test confirms that TYLO is the most energy-efficient sauna heater.

The most even bathing temperature.

A divided output is the secret behind the constant bathing temperature and lower energy consumption of a TYLO heater. Divided output means the heater elements cycle in stages. For the initial heat up all the elements are on, then the elements cycle on and off in stages as needed to maintain an even temperature. Other heaters are either 100% on or completely off, resulting in a temperature swing. TYLO heaters maintain an overall higher and more consistent temperature.

The finest material quality.

Only TYLO has a solid-cast top, inner casing and stainless steel stone compartment.

Optimum water sprinkling.

A deep generously proportioned stone compartment, and direct contact between the stones and the heating elements ensure perfect water sprinkling with 100% vaporization.

Built-in humidifier.

This unique TYLO feature further enhances your sauna bathing experiences.

Safe to touch.

Thermosafe soft touch covering ensures a low surface temperature - just 40°C on the front and sides of the heater.

Best in test.

Time and time again TYLO has scored top marks in Finnish sauna tests. TYLO was first awarded the coveted "Best in Test" accolade in competition with seven Finnish heaters in 1982. A test published in a Finnish magazine (Kuluttaja no.5, 1995) confirmed that TYLO also has the quickest heating-up time and lowest energy consumption. A SEMKO test in April 1999 confirmed this result, and also proved that the steam generating performance of TYLO heaters was unrivaled.





SenseSport
(control at
bottom of heater)

Control panel
with thermostat and
mechanical timer
integrated into the
base of the heater



The Sense models are a brand new sauna heater, combining sleek design with the reliable functionality and genuine quality of TYLO. Removable compartment for fragrant essences



**TYLO SENSE PLUS with
PURE 2.0 or ELITE control**

The TYLO SENSE PLUS uses the separate control mounted outside the sauna or inside at less the 3' above floor level.

**PLUS
Control**



**Elite Wi-Fi
Control**



TYLO SENSE COMBI w/ PURE or ELITE

The TYLO COMBI is quite simply the most sophisticated sauna heater on the market-the only heater that lets you enjoy traditional saunas and steam or herbal saunas (Tylarium) in one and the same room. The choice is yours-a traditional sauna at 68-90°C (155-194°F) in a relative humidity of 5-35%, or a steam sauna at 45-65°C (110-150°F) with steam at 40-65% humidity. You can even add a little spice to your bathing with a refreshing herbal sauna. The heater has built-in dispensers for dried or fresh natural herbs and liquid essences, so you can blend your own favorite fragrance.

The COMBI has all the hallmark features of a quality TYLO heater, plus a number of special technical innovations: electronic programming of bathing mode (time, temperature and humidity), stainless steel water reservoir, 10 hour pre-set function and a 1 hour bathing time. Automatic and manual on/off, electronic low-water cut-off; and automatic drying function after completion of steam sauna cycle.

Residential Models	KW	VOLTS	PHASE	AMPS	*BREAKER	*WIRE	CUBIC FEET	
							MIN.	MAX.
5	4.7	240	1	18.3	30	10	70	210
7	7	240	1	29.2	40	8	140	320
8	8.3	240	1	34.6	40	8	175	440

*Breaker & wire size is recommendation only. Confirm with your licensed electrician.



Tel 905-738-4017 Toll Free 1-800-387-7029

Fax 905-738-2486

www.saunafin.com