



# SaunaFin

Saunas & Steambaths

**LK FLOATING BENCH OPTION**

## LK FLOATING BENCH OPTION

The Floating Bench option is available only with LK Plus kits.

Floating benches refer to a bench with no visible floor supports.

Bench tops are 1×4 hemlock.

The Bottom Bench extends fully under the top bench. Top=20", Bottom=36"

### YOU SUPPLY:

- You provide the 2×6 SPF studs-to-frame bench.
- We supply the USP inverted Joist hanger, Lumber Loc screws and driver bit.

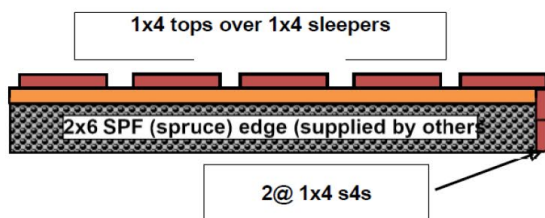
### WE SUPPLY:

- 1 × 4 Select, Clear hemlock for bench tops.
- Joist hanger.
- Lumber Loc Torx 20 screws.
- Torx 20 driver bit.

### NOTE:

All doors and door jambs have some cedar.

Unless specified and ordered as Hemlock, all trim (corner molding, casing, heater guard) is made from cedar.



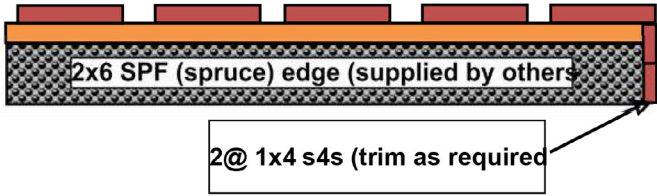
**FLOATING SAUNA BENCH**

1x4 (clear) tops over 1x4 girth over 2x6 Spruce joist (on edge). 2x6 sitting on Joist Hanger (For benches under 6' long, joists and hangers may be reduced to 2x4)

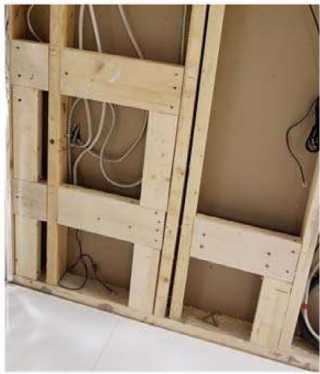
**Bench Sub-Structure (joists) By Others - We provide joist hanger & screws)**



1x4 tops over 1x4 sleepers  
w/ 3/4" gap



double plate of 2x6 with  
vertical 2x4 to transfer load to floor.



Secure joist hanger through hemlock in to 2x6  
blocking Attach one 2x6 to joist hanger  
(using Lumber Loc screws & bit provided)  
Attach second 2x6 to face for additional support



Back 2x6 to fastened through hemlock in to vertical  
studs (blocking not required)



Back 2x6 support  
Secure to back wall (into wall studs)

Double 2x6 @ front  
One on joist hanger

2x6 cross member 12" o.c.



**SaunaFin**  
Saunas & Steambaths

**SAUNAFIN SAUNA & STEAM**

106 Rayette Road, Unit 1, Concord, ON, L4K 2G3

**TOLL-FREE**

1-800-387-7029

**PHONE**

905-738-4017

**EMAIL**

[info@saunafin.com](mailto:info@saunafin.com)

**WEB**

[www.saunafin.com](http://www.saunafin.com)