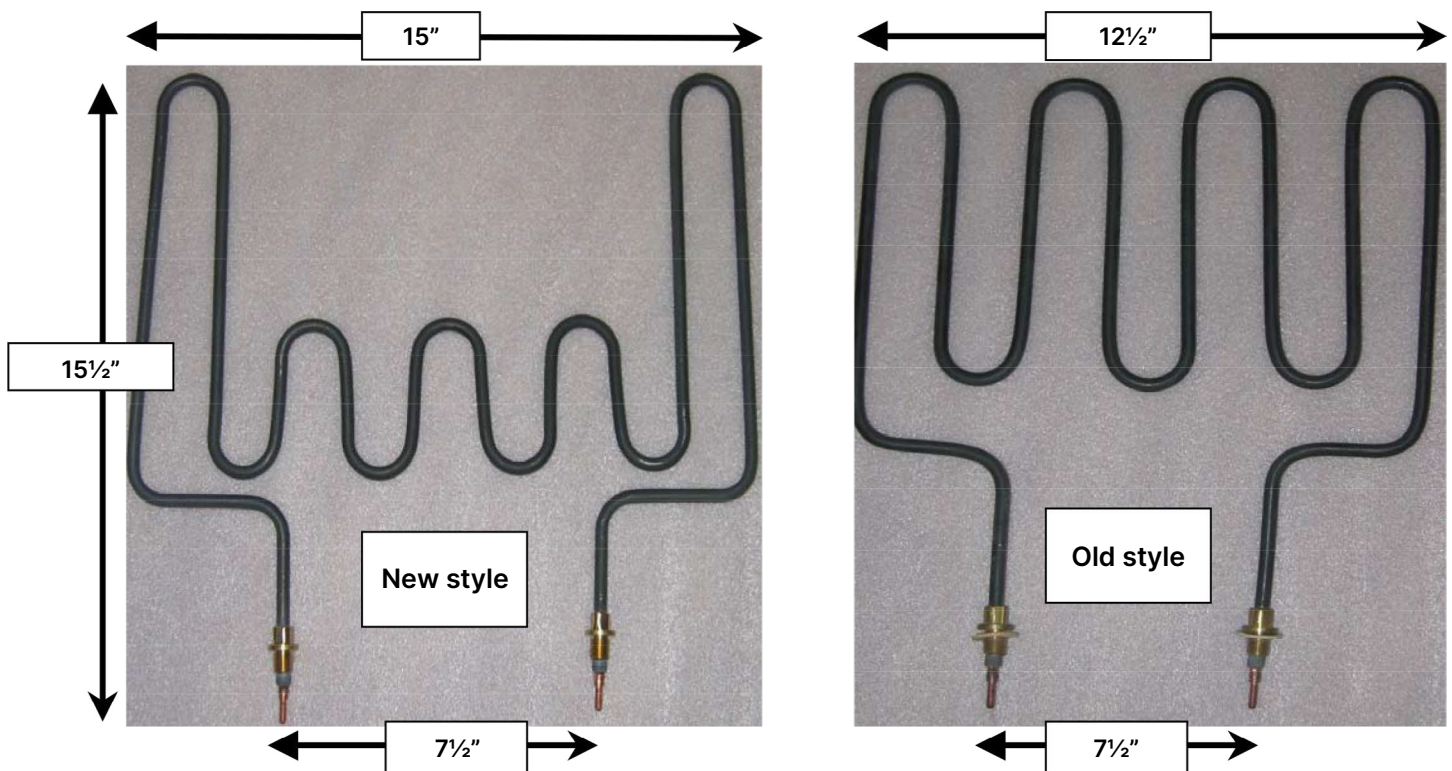




# SaunaFin

Saunas & Steambaths

**SAUNA CRAFT ELEMENT REPLACEMENT**

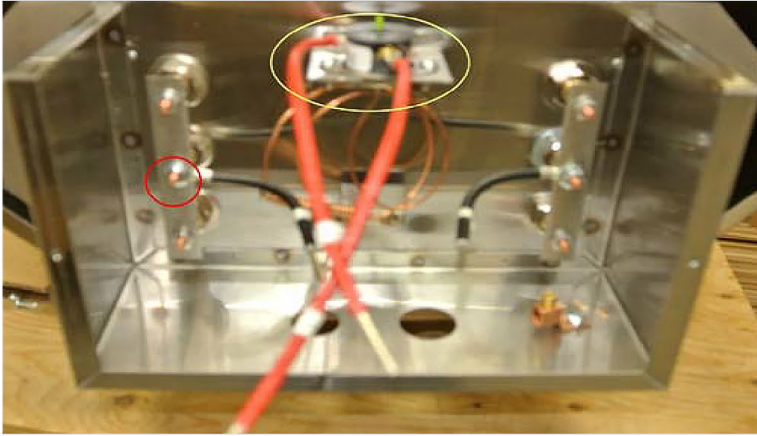


Sauna Craft elements have been redesigned recently to accommodate some of the newer heater designs. The height and terminal connections are the same. However, the new elements are a little wider. These elements still fit into the heaters. In a used heater, after extended use, the inner baffles may buckle slightly. If needed, you can squeeze the new elements to get them to fit in. This will in no way affect the element operation.

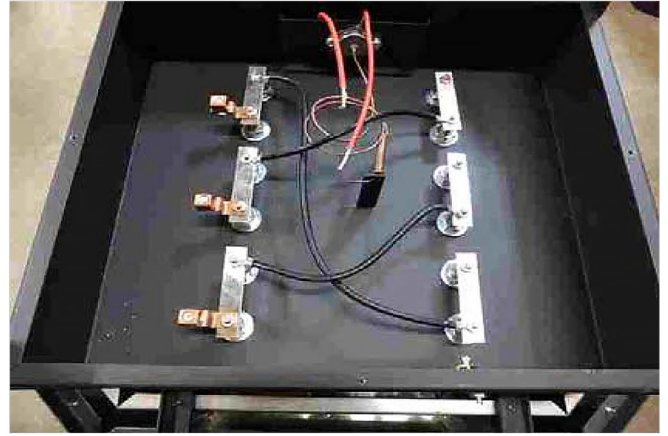


**New style element  
installed in heater**



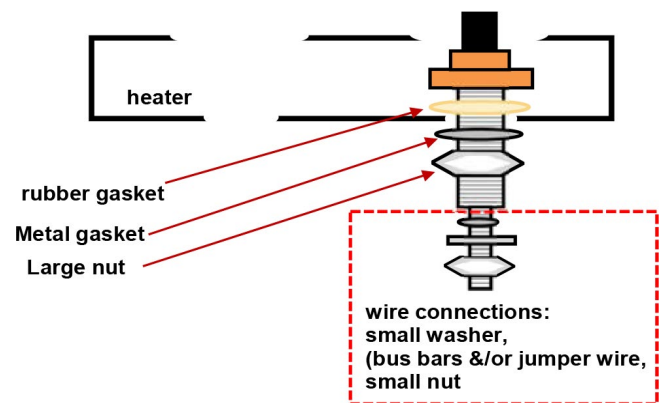
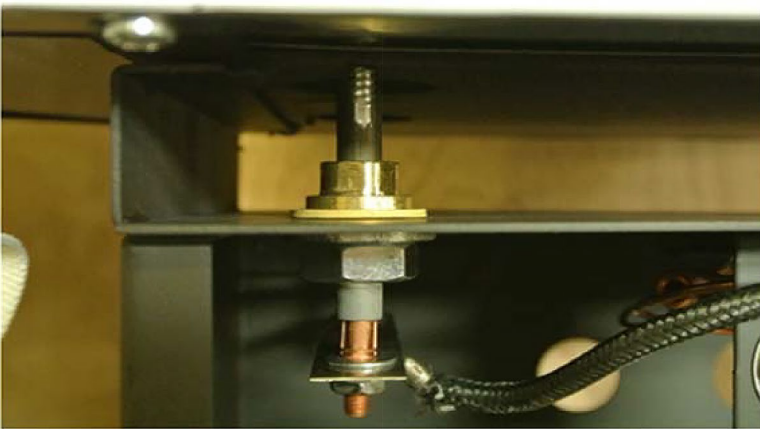


Three element, single phase heater



Six element, 3-phase heater

1. Turn off breaker.
2. Remove rock tray at top.
3. Remove electrical cover plate.
4. Remove wire connections from element being replaced using socket wrench or ratchet, remove bolt securing element to frame.
5. Remove elements from top.
6. Install new element with gaskets and washers as detailed in drawing.





**SAUNAFIN SAUNA & STEAM**

106 Rayette Road, Unit 1, Concord, ON, L4K 2G3

**TOLL-FREE**

1-800-387-7029

**PHONE**

905-738-4017

**EMAIL**

[info@saunafin.com](mailto:info@saunafin.com)

**WEB**

[www.saunafin.com](http://www.saunafin.com)