



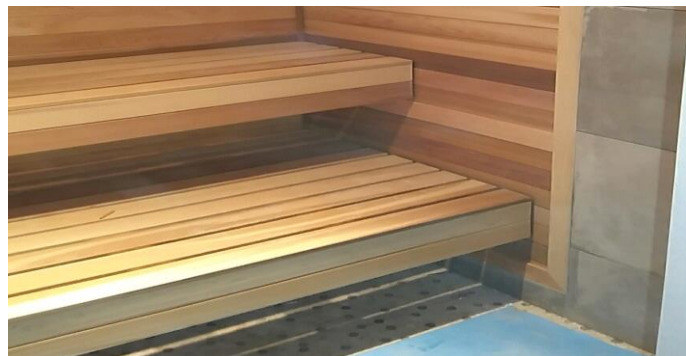
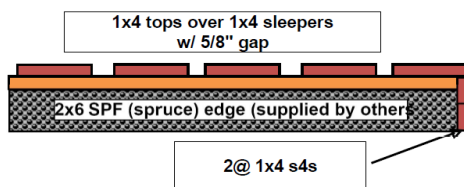
115 Bowes Rd, Unit 2,
Concord, ON. L4K 1H7
Ph:905-738-4017 / 800-387-7029
sales@saunafin.com
www.saunafin.com

LK FLOATING BENCH OPTION

"Floating Bench" option is available only with LK Plus kits.
Floating benches refer to a bench with no visible floor supports.
Bench tops are 1x4 cedar as opposed to the LK Plus standard 2x4 bench tops.
Bottom Bench extends fully under top bench. Top=20", Bottom=36"
You provide the 2x6 SPF studs to frame bench.
We supply the USP inverted Joist hanger, lumber loc screws and driver bit.

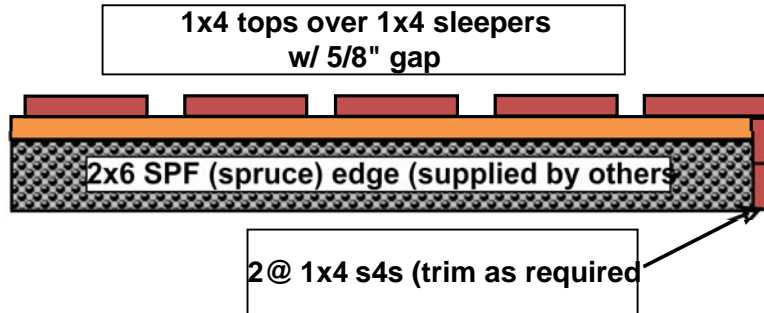
WE SUPPLY:

- * 1 x 4 Select, Clear, kiln-dried Western Red cedar for bench tops.
- * USP inverted joist hanger
- * Lumber Loc Torx 20 screws
- * Torx 20 driver bit

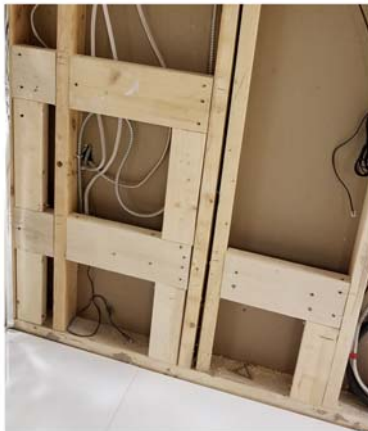


Notes:

Floating Sauna Bench 1x4 (clear) tops over 1x4 girth over 2x6 Spruce joist (on edge). 2x6 sitting on Joist Hanger
 (For benches under 6' long, joists & hangers may be reduced to 2x4)
Bench Sub-Structure (joists) By Others - We provide joist hanger & screws)



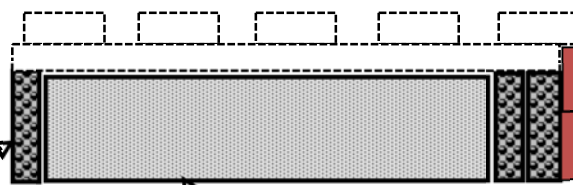
double plate of 2x6 with vertical 2x4 to transfer load to floor.



Secure joist hanger through cedar in to 2x6 blocking
 Attach one 2x6 to joist hanger (using Lumber Loc screws & bit provided)
 Attach second 2x6 to face for additional support



Back 2x6 to fastened through cedar in to vertical studs (blocking not required)



Back 2x6 support
 Secure to back wall (into wall studs)

Double 2x6 @ front
 One on joist hanger

2x6 cross member 12" o.c.